

ST[®] LOUIS

4 LIGHT ROYAL SCNCE



TECHNICAL DATA SHEET

FEATURES

Product name 4 light Royal sconce
 Reference 2a04bcdefgg
 For digit a, c, d, e, f (decoration options and structure) see possibilities on page 2
 b= 1 : Europe/ 3 : US/ 4 : Japan

gg = (use digit 1 in b) Ø : standard version / CN : China version /
 SA : Middle east version / TW : Taiwan version / KC : Korea version /
 MA : Morocco version / GB : United Kingdom version

Material Cristal, metal structure chrome or gold
 Electrical class Class I
 Tension 220-240V 50/60Hz (EU, GB, CN, KC, TW, MA version)
 100-127V 50/60Hz (US, JP version)
 IP 20
 Installation Inside
 Mounting Wall light

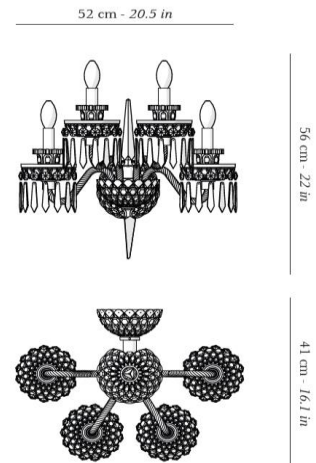
DIMENSIONS

Width 52 cm
 Height without hurricanes 50 cm
 Height with hurricanes 56 cm
 Ledge 41 cm
 Weight
 without hurricanes 6 kg
 with hurricanes 9,5 kg

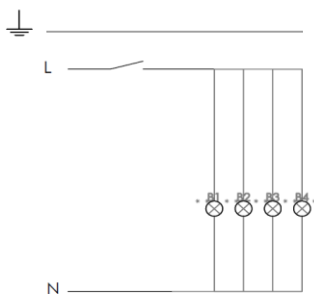
LIGHTING SOURCE

Quantity of bulb : 4
 Socket 100-127V : E12
 220-240V : E14
 Watt : Halogen : 40W max
 Led Retrofit : 5W max

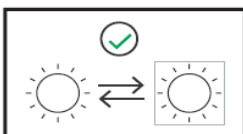
SILHOUETTE



ELECTRICAL DIAGRAM



MAINTENANCE



* : The references of this product range are totally or partly covered by these certifications. Please check with customer service before ordering

Option possibilities

Digit	Category of information	Description	Corresponding number
a	Family	Royal	B
		Royal flannel-grey	C
		Royal clear and flannel-grey	D
		Royal with amber cups	G
		Royal with blue cups	H
		Royal with amethyst cups	I
		Royal with chartreuse-green cups	J
		Royal with sky-blue cups	K
		Royal with flannel-grey cups	L
		Royal with black cups	M
c	Hurricane holder X height	With hurricane holder - long size chrome - no upper arms	5
		With hurricane holder - long size gold - no upper arms	E
d	Hurricane / Shade	without hurricanes or shades	0
		Lady	1
		Mary	2
		Victoria	3
		Apollo	4
		Apollo gold rim	5
		Apollo platinum rim	6
		Laetitia	7
		Thistle	9
		White shade	A
		Tommy	B
		Small Tommy	C
		Small with 36 bevel cut	D
		Black shade	E
		Flannel-grey shade	F
e	Pendant / octagon	No pendants - no crystal chains	0
		Clear prism - no clear octagon - no crystal chains	1
		Clear prism - blue octagon - no crystal chains	2
		Clear prism - amber octagon - no crystal chains	6
		Clear prism - red octagon - no crystal chains	8
		Pear - clear octagon - no crystal chains	A
		Pear - blue octagon - no crystal chains	F
		Pear - amber octagon - no crystal chains	G
		Pear - red octagon - no crystal chains	H
		Clear prism - with clear octagon - no crystal chains	J
		Clear prism - with square clear stone - no crystal chains	M
		Lilac prism - with clear octagon - no crystal chains	P
		Clear prism - black octagon - no crystal chains	S
		Satin finish prism - black octagon - no crystal chains	T
f	Upper arms	No upper arms	0